

Dräger HPS Firefighter Helmets Damage Assessment and Recommendations for Further Action



- 1 TYPE OF DAMAGE:
DAMAGE TO HELMET SHELL MATERIAL**
- OK - CONTINUE
 - DEFECTIVE - DO NOT CONTINUE TO USE!
 - CF. MAINTENANCE AND TESTING INSTRUCTIONS

- ✓ Minor abrasions or cuts which are no deeper than 0.25 mm and with a diameter of less than 20 mm. A repair set should be used for colour touch-up (order number depends on colour of helmet).
- ✗ Helmets with abrasions or cuts which extend into the glass-fibre layer (also including edge damage) must be classified as defective.



- 2 TYPE OF DAMAGE:
EDGE DAMAGE**
- OK - CONTINUE
 - DEFECTIVE - DO NOT CONTINUE TO USE!

- ✗ Indications for deformation of helmet shell. Abnormal bulging, indentations or deformed edges on helmet shell.



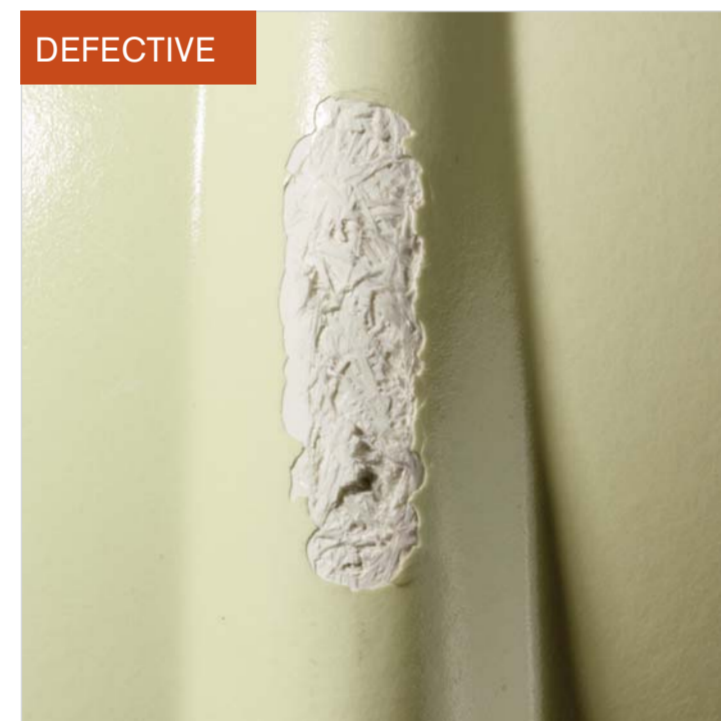
- 3 TYPE OF DAMAGE:
IMPACT DAMAGE**
- OK - CONTINUE
 - DEFECTIVE - DO NOT CONTINUE TO USE!
 - CF. MAINTENANCE AND TESTING INSTRUCTIONS

- ✓ Light to medium levels of impact damage which result in cracks or tears in the exterior layer. Whitish areas in the exterior glass-fibre layer with max. diameter of 10 mm or exterior layer chipping with max. diameter of 20 mm.
- ✗ Helmets with exterior layer chipping with diameters larger than 20 mm, material abrasion which extends into the glass-fibre layer or delamination of helmet shell material must be classified as defective.



- 4 TYPE OF DAMAGE:
LARGE AREAS OF MATERIAL ABRASION
AND/OR DELAMINATION OF HELMET
SHELL MATERIAL**
- OK - CONTINUE
 - DEFECTIVE - DO NOT CONTINUE TO USE!

- ✗ Helmets with large areas of material abrasion which extends into the glass-fibre layer, with cut and openly visible fibres or delamination of helmet shell material must be classified as defective.



- 5 TYPE OF DAMAGE:
HEAT AND/OR FIRE DAMAGE**
- DEFECTIVE

- ✗ Helmets which have been exposed to very high levels of thermal stress and/or open flames must be classified as defective.



- 6 TYPE OF DAMAGE:
DAMAGE AS THE RESULT OF EXPOSURE
TO CHEMICALS**
- THE EXTENT OF DAMAGE AS THE RESULT OF EXPOSURE TO CHEMICALS SHOULD BE ASSESSED BY DRÄGER SPECIALISTS



- 7 TYPE OF DAMAGE:
DAMAGE TO VISOR**
- OK - CONTINUE
 - DEFECTIVE - REPLACE VISOR

- ✓ Minor scratches within the field of view as well as any type of scratches, fogging, blisters and minor deformations outside of the field of view.
- ✗ If clearly visible scratches, fogging, blisters and deformations are present **within** the field of view, the visor should be replaced.



- 8 TYPE OF DAMAGE:
SOILING CAUSED BY SMOKE FUMES**
- CLEANING NECESSARY

- ✓ Soiling caused by smoke fumes or other deposits: Cleaning is necessary in order to make thorough visual inspection possible.



9 IDENTIFICATION MARKINGS

- Manufacturer abbreviation Dräger Safety
- Type: Integral helmet
- Helmet size range
- Helmet material
- Electrical isolation in accordance to EN 443
- Notified Body
- European standard for firefighter helmets
- Helmet suitable for use in temperature ranges of as much as -40°C
- Maritime Equipment Directive with information concerning issuing authority and validity

Product name
Month and year of manufacture
Production facility
Poshtest - Russia